

Biodiversity Management Approach

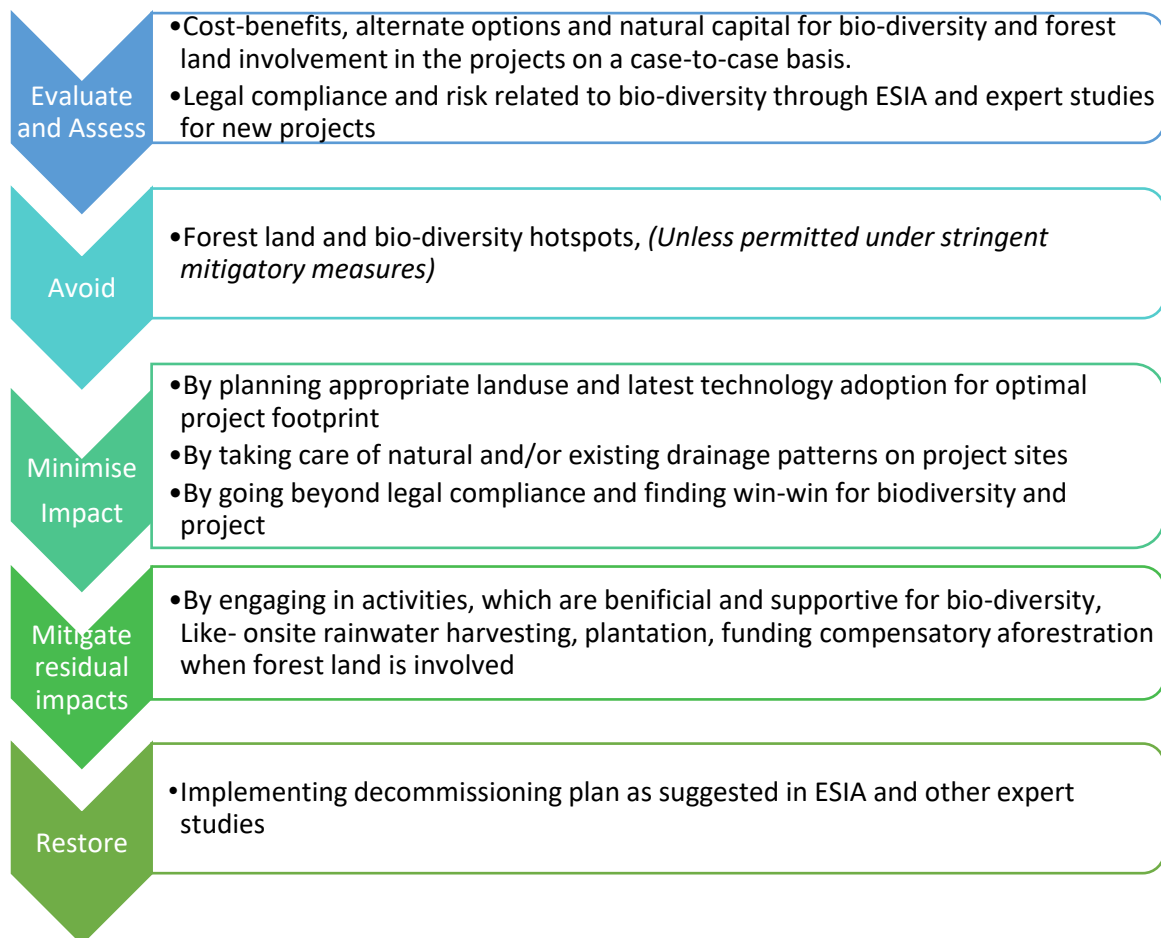
We, the people at ReNew, believe, that biodiversity and its related ecosystems such as forests, grasslands, and urban areas, provide different services to the society, collectively known as eco-system services. We recognise the relationship between eco-system services and our business sustainability. The Company thus aims to minimise any negative impact on biodiversity and eco-system Services.

Given the nature of renewable energy projects, significant land is required for renewable energy projects like: solar PV farms and other linear projects that may need to involve and pass-through forests and other bio-diversity-rich areas for establishing the intent of our business- Providing Green Energy.

ReNew aims to explore and integrate the bio-diversity aspect into its management systems, including Environmental Management System based on ISO14001. The Company also periodically reviews its approach and aligns with the International Convention on Biodiversity and initiatives by the Government of India e.g India Business and Bio-diversity Initiative (IBBI).

At ReNew, we commit to undertake voluntary Environmental and Social Impact Assessment (ESIA) and implement applicable recommendations of the study for all projects above 50 MW and Initial Environment Evaluation (IEE) for projects below 50 MW.

ReNew is adopting the mitigation hierarchy principle established by International Finance Corporation (IFC) performance standards [IFC PS (6)]. Approach towards biodiversity impact management is aligned with the mitigation hierarchy as follows:



Mitigation Hierarchy I

In view of assuring the safety of things that matters to us the most, Namely- our environment and it's entities, ReNew has adopted a proactive approach towards biodiversity management as part of its Quality, Health and Environment (QHSE) policy.

The Company has its functional environmental management system as per requirements of ISO 14001 where environmental aspects and impacts including biodiversity are identified and compliance with applicable environmental and other regulation(s) is ensured.

As part from its business approach, ReNew is committed towards conducting prior due diligence of the potential project sites. Plan initiates from avoiding any eco-sensitive zone, forest land as the choice of project proposal. We ensure, to steer away from the slightest of harm to the flora and fauna existing on the field by checking alternate options. However, keeping in mind the need of urgency in green electricity requirement if we have to put our foot down where forest diversions are required, we have our stringent mitigatory methods tailored to the project site for such cases; Inclusively all applicable processes under local laws are followed with sensitivity and prime focus.

ReNew, at it's end- confidently ensures to commission voluntary site level Environmental Social Impact Assessment (ESIA) study for all projects to map any probable risks that the project may pose to the biodiversity.

As recommended, the Site-specific mitigation measures followed are:

- Prior survey for suitable and sustainable route and site selection
- Installation of bird guards and diverters on transmission lines wherever required as per expert studies.
- Installation of wildlife signages at strategic locations on sites.
- Painting blade tips of WTGs for better visibility
- Installation of white static light and red blinking light to reduce collision risks.
- Adoption of latest technology like robotic cleaning (Dry cleaning) for water conservation
- Installation of wildlife signages at strategic locations on sites.

ReNew is committed to leave net-positive impact on the environment and biodiversity.